

# **Dolphin** Dance Lodge

A HOME AWAY FROM HOME

# **BROCHURE**

## ABOUT US

# Lodge and Self-Catering Accommodation

Dolphin Dance accommodation is situated in Bluewater Bay, Gqeberha (formerly Port Elizabeth) and offers a large variety of accommodation to suite all your needs. We pride ourselves in offering top value and service in any of our facilities which can house up to 70 persons sharing.

Our accommodation facilities consist of the following:

## Dolphin Dance Lodge & Dolphin Dance Self-Catering

📍 Bluewater Bay,  
Gqeberha (formerly  
Port Elizabeth)

🏠 Up to 70 Guests

📶 Free WiFi



# LODGE



# SELF-CATERING



# Dolphin Dance Lodge



Dolphin Dance Lodge is situated on the beachfront in Bluewater Bay, Gqeberha (formerly Port Elizabeth). The Lodge offers 4 Star accommodation, comfort and service. Enjoy your breakfast and sundowners overlooking the ocean and view Dolphins and Whales (in season) or enjoy watching the abundant birdlife in the Fynbos exclusive to this area.

At Dolphin Dance Lodge, we pride ourselves in offering top value and service, which we have been awarded the AA Superior Accommodation rating. Dolphin Dance's location is ideal for tourists and business travel. There is a guest lounge, a veranda upstairs and another large veranda downstairs so as to capitalise on the sweeping sea view of Algoa Bay and the city. Dolphins can be viewed almost daily, as well as whales in season. There are also built-in barbecues on both verandahs for entertaining in style.

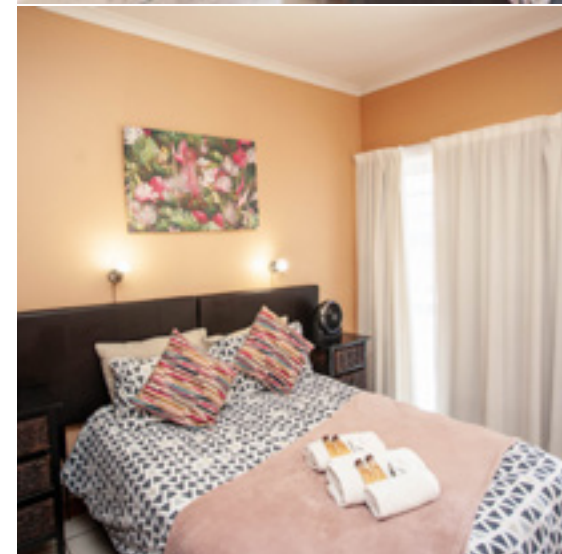
There is fenced parking and internet facilities (Unlimited free Wi-Fi) for guests at all our facilities.

**Our amenities:** Dstv, Secured parking, Laundry service, Bar fridge, Guest safe for valuables, Coffee and tea facilities and many more.

📍 Bluewater Bay,  
Gqeberha (formerly  
Port Elizabeth)

🏠 Up to 70 Guests

📶 Free WiFi



**Sea View Rooms**

**Executive Rooms**

**Family Suite**





# Dolphin Dance Self-Catering units

★ ★ ★

Dolphin Dance also offers comfortable self catering accommodation in Bluewater Bay, Gqeberha (formerly Port Elizabeth). The Dolphin Dance Self Catering Units are located a short distance away from the main lodge and within less than 5 kms from the beach.

These self catering units are situated in a walled complex and each unit has its own secluded garden with built in braai. All units have fenced parking (max 2 cars per unit) , unlimited free WI-FI.

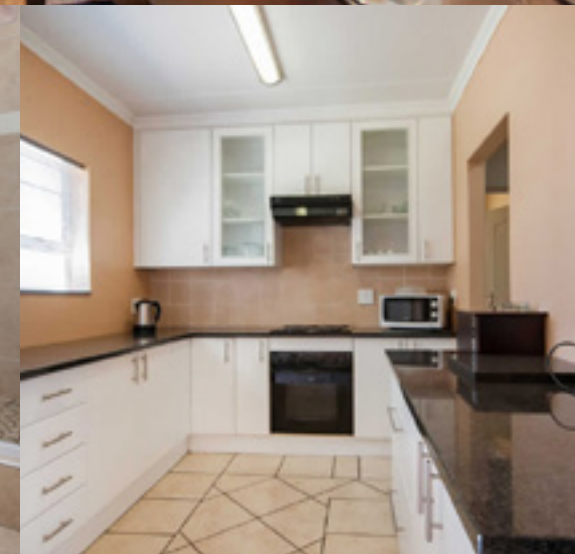
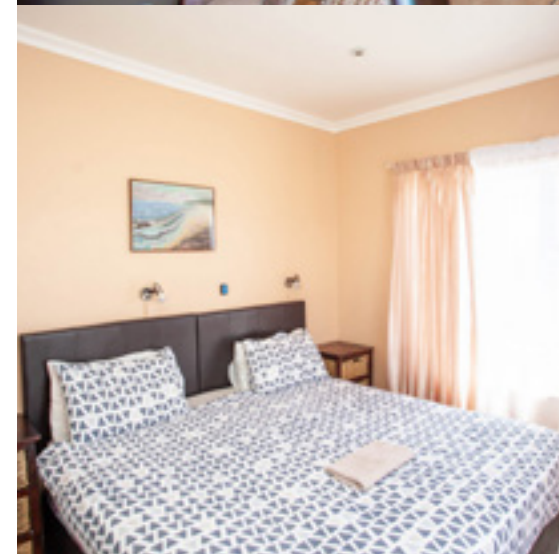
The units are setup and are focused for Self Catering accommodation, however guests are more than welcome to request accommodation on a B&B basis. Breakfasts are enjoyed in the luxury of the Dolphin Dance Lodge. Lunch and dinner is also available on request at the lodge. The units can take a maximum of 36 guests.

**Our amenities:** Dstv, Secured parking, Laundry service, Bar fridge, Guest safe for valuables, Coffee and tea facilities and many more.

📍 Bluewater Bay,  
Gqeberha (formerly  
Port Elizabeth)

🏠 Up to 70 Guests

📶 Free WiFi



## Self-Catering Units





## Local Attractions

 Richmond Hill

 Sardinia Bay


 Cape Recife

 Nanaga Farmstall

 Addo Elephant Park

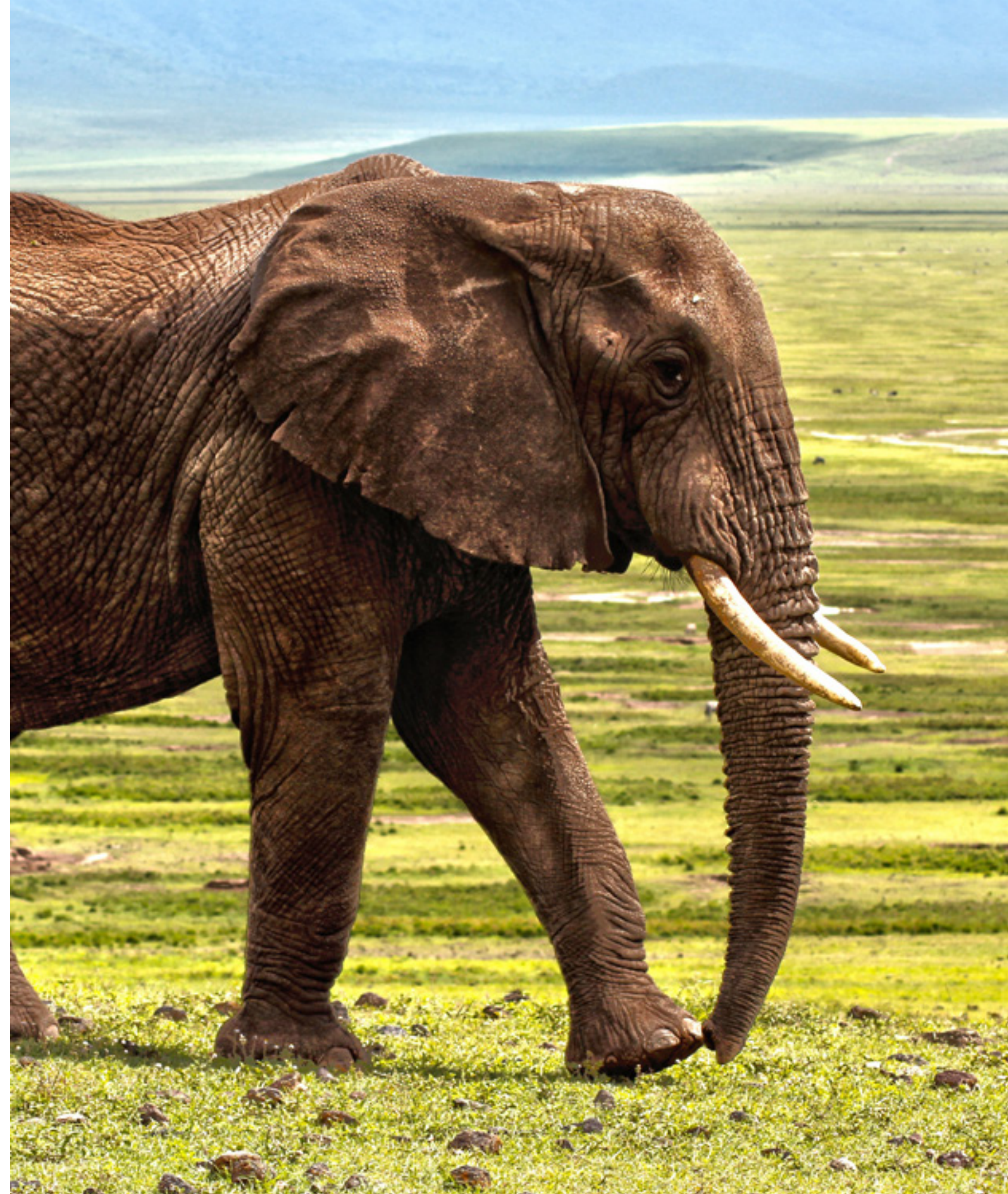
 Aldo Scribante

 Beachfront

 Bluewater Bay,  
Gqeberha (formerly  
Port Elizabeth)

 Up to 70 Guests

 Free WiFi







## Contact Details

✉ [info@dolphindance.co.za](mailto:info@dolphindance.co.za)  
f [dolphindancelodge](https://www.facebook.com/dolphindancelodge)

☎ 041 467 1469      📞 068 185 7948  
🌐 [www.dolphindance.co.za](http://www.dolphindance.co.za)

📍 Bluewater Bay,  
Gqeberha (formerly  
Port Elizabeth)

🏠 Up to 70 Guests

📶 Free WiFi